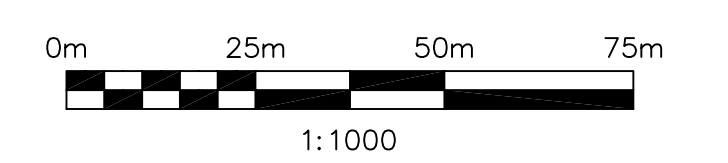
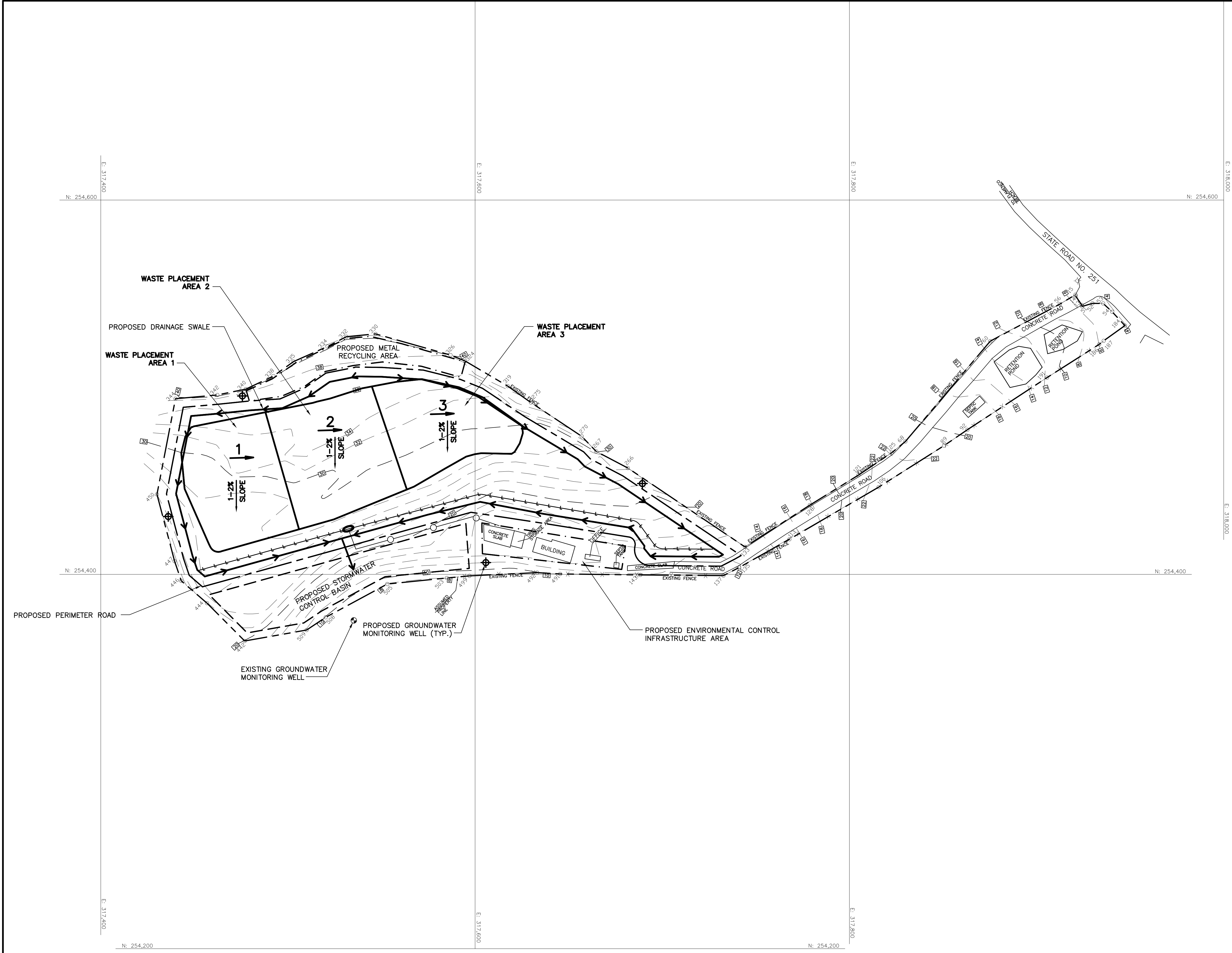


- NOTES:**
- FOR GENERAL NOTES AND LEGEND, SEE SHEET 2.
  - THIS PLAN REPRESENTS ONE POTENTIAL WASTE PLACEMENT CONFIGURATION. WASTE PLACEMENT SHALL BE CONDUCTED IN ACCORDANCE WITH A PRESCRIBED PLAN THAT CONSIDERS STORMWATER CONTROL, LEACHATE CONTROL, AND LIMITING THE SIZE OF THE WORKING FACE. THE OWNER SHALL DEVELOP AND ADOPT A SEQUENTIAL WASTE PLACEMENT PLAN AND INCORPORATE IT INTO THE SITE OPERATIONS AND MAINTENANCE MANUAL AND/OR OPERATIONAL PLANS.



**NOT FOR CONSTRUCTION**



User: ddowney Spc: PIRNIE STANDARD File: T:\2451088\CADD\PHASE1\Culebra\dwg\PH2-CULEBRA-04.DWG Scale: 1:25 Date: 10/06/2004 Time: 06:38 Layout: Layout2



REVISIONS				
NO.	BY	DATE	REMARKS	

DES	HJH/JTS
DWN	CLD
CID	JCB

COMMONWEALTH OF PUERTO RICO  
SOLID WASTE MANAGEMENT AUTHORITY  
**APPENDIX A – PROGRESS REPORT  
CONCEPTUAL SITE PLANS**

CULEBRA LANDFILL  
**CONCEPTUAL SEQUENTIAL WASTE  
PLACEMENT PLAN**  
SCALE AS NOTED

COPYRIGHT ©  
VINCENTY, HERES & LAURIA/  
MALCOLM PIRNIE, INC.  
DATE NOVEMBER 2004  
SHEET 5 OF 6  
CAD REF. NO. PH2-CULEBRA-05